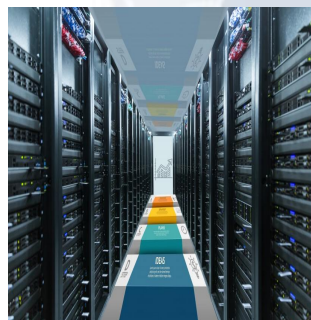
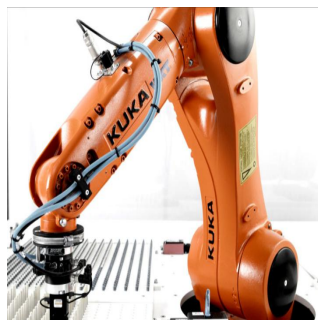




**Excellent connection  
solution service provider**

**东莞市久旺电子有限公司 Dongguan Jiuwang Electronic Co.,Ltd**





## Company Introduction

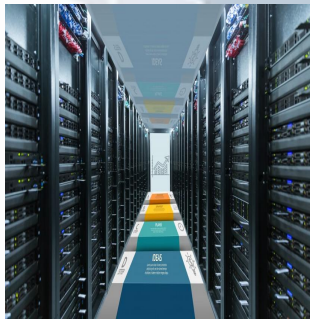
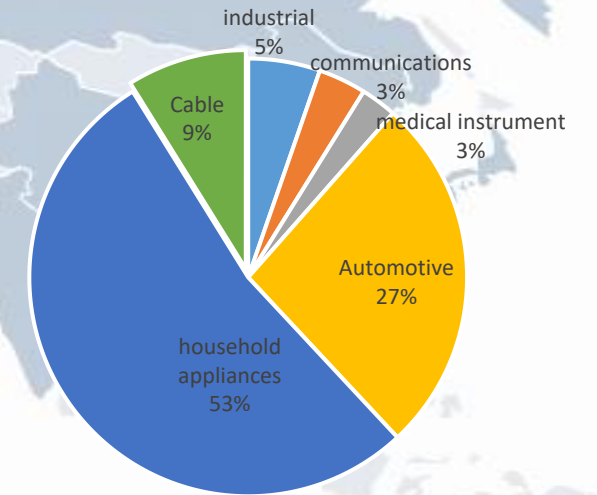


Established in 2007, Dongguan Jiuwang Electronic Co.,Ltd. is a global supplier focusing on providing wiring harness systems for industrial equipment, household appliances, communications equipment, medical instrument and NEV powertrain system, and safe & reliable connecting solutions and services for power and signal transmission.

As a customer's best choice, Jiuwang always holds technology trend at its core while taking into account the integration of product development and application services, and gradually accomplishes the transition from traditional manufacturing to intelligent production. Jiuwang has both professional and innovative multi-product series. Our products have been patented by many national utility models and have passed NQA International Certification Co. Ltd.: ISO9001:2015, ISO14000: 2015, IATF16949: 2016 quality management systems certified by UL of USA.

## Business Unit

Business unit	location	main business
JW	Dongguan&Chenzhou	Manufacturing and sale of industrial wire harness
JW	Dongguan&Chenzhou	Manufacturing and sale of vehicle HV&LV wire harness
JW	Dongguan&Huizhou	Manufacturing and sale of communications wire harness
JW	Dongguan&Huizhou	Manufacturing and sale of medical instrument wire harness
JW	Dongguan&Nanning	Manufacturing and sale of household appliances wire harness
Longhui	Dongguan&Chenzhou	Manufacturing and sale of wire and cable





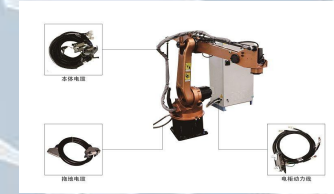
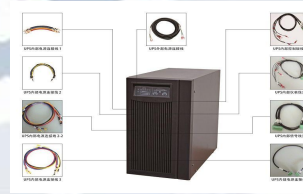


## Industrial equipment, Household appliances , Communications equipment, Medical instrument wire harness Unit

Industrial equipment, Household appliances , Communications equipment, Medical instrument wire harness Unit of JW is the basis of the company . We provide high quality service for the world's top 500 and advanced enterprises .In the last 15 years,the products of our company was recognized by dozens foreign companies.The following is the basic introduction of our client.



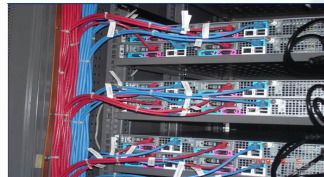
Industrial equipment



Household appliances



Communications equipment



Medical instrument



Industrial equipment, Household appliances , Communications equipment, Medical instrument wire harness-Client group

KUKA

Midea

PHILIPS

Nidec 日本电产三协株式会社  
尼得科

TOPBAND 拓邦  
全球领先的智能控制方案提供商

Galanz 格兰仕

HeT® Intelligent Control

Donlim 东菱

ANJUBAO

ARROW  
箭牌卫浴

MEGMEET

mindray 迈瑞

CRISTAL

YADA®

THE NEW VALUE FRONTIER  
京瓷 创造新价值  
KYOCERA

EDAN

ECOVACS

TOSHIBA

molex

EMERSON  
Industrial Automation



## Vehicle HV&LV wire harness Unit

Vehicle HV&LV wire harness of is the future major development direction of the company . We are striving to become an excellent automotive wiring harness supplier in the industry.The following is the basic introduction of our client.



ICE vehicle



New energy vehicle

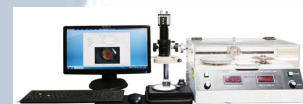
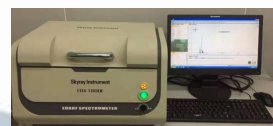
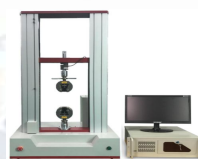




Vehicle HV&LV wire harness Unit-Client group



# Quality Assurance



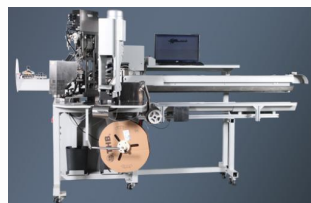
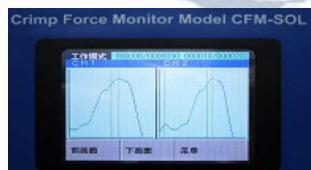
Excellent quality is our eternal pursuit! Through the implementation of IATF16949 and regular passage of international audit, we have established a comprehensive quality management system and quality assurance system. The product quality can be fully controlled through self-review system audit, process VDA6.3 audit and product audit.

## Test Projects

- Temperature Cycling
- Consistent temperature
- Temperature & humidity cyclic
- Salt test
- Flame spread resistance
- IP67/IP68
- ROHS
- High Voltage
- Contact resistance
- Isolation
- Complex test
- Temperature rising test
- Voltage cut test
- 5000N Pull
- Insert test
- Terminal section check
- Wave test



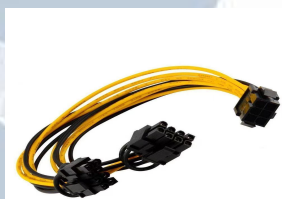
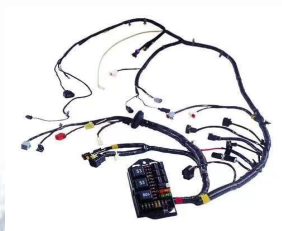
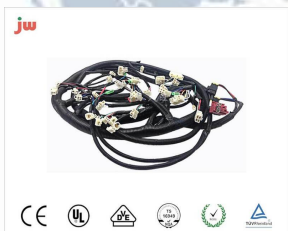
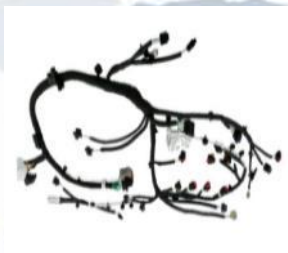
## Production Capabilities



JW has the superior manufacturing capabilities, JW has the most advanced production lines and complete industry chain.

### Equipment&Capabilities

- Dual-end Crimp / Dual-end Seal Insertion and Crimping Machines
- J.A.M JNO3S Dual-end Crimping Machines
- Intelligent pressure management system
- Intelligent line sequence detection system
- HV wire harness Crimping Machines
- 6 cable&wire production lines
- More than 700 employees are engaged for JW
- 20 wire harness production lines





# THANKS

**Dongguan Jiuwang Electronic Co.,Ltd.**

Add:No.2 building Dongci industrial district, Shijie town,Dongguan City,Guangdong Province, China.

E-mail:sales@0769jw.com

Web: [www.0769jw.com](http://www.0769jw.com)